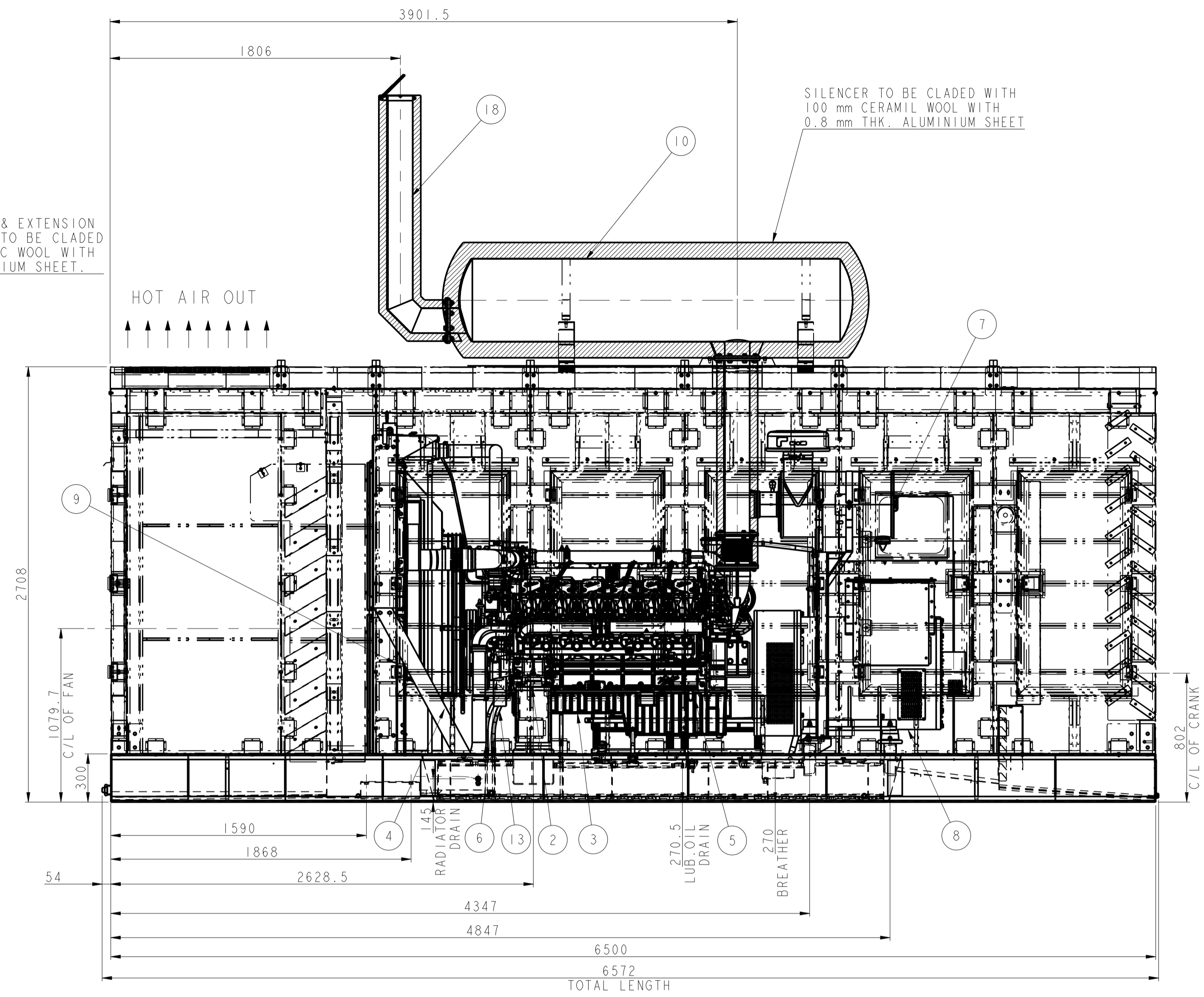
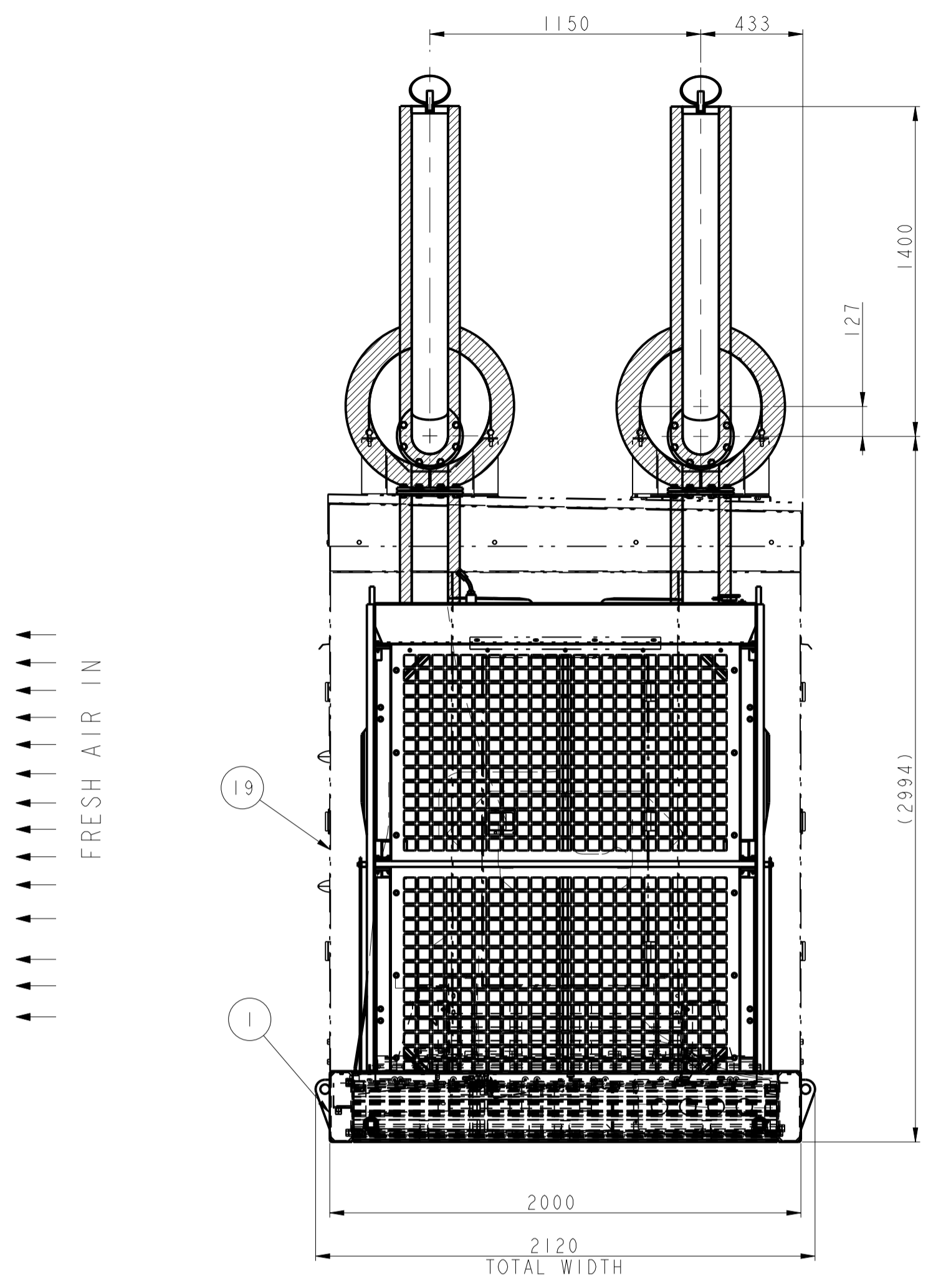


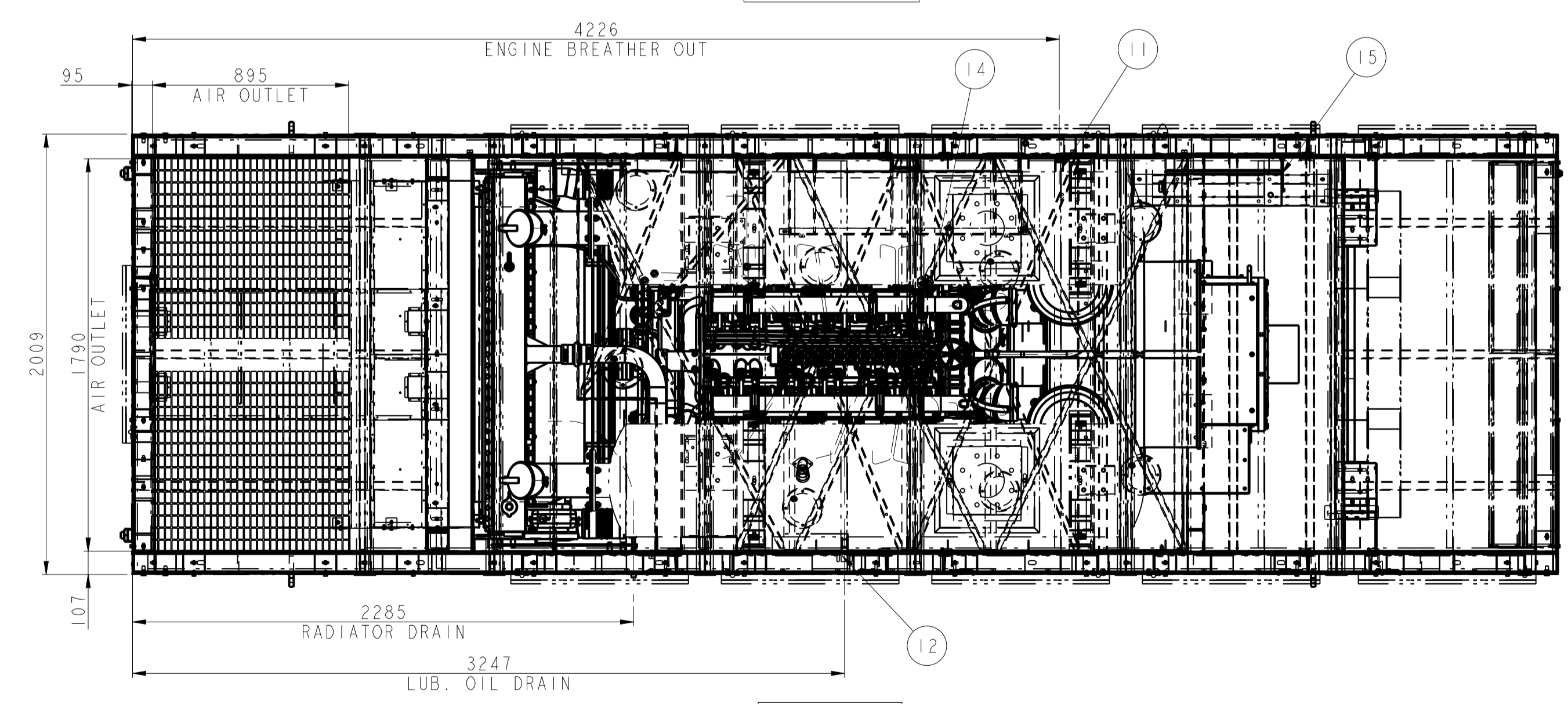
VIEW FROM ALTERNATOR SIDE



FRONT VIEW



VIEW FROM GEAR END SIDE



TOP VIEW

19	CANOPY ASSEMBLY
18	EXHAUST BEND
17	BATTERY & BATTERY CABLE
16	EARTHING CABLE
15	CONTROL PANEL
14	FUEL LEVEL SENSOR
13	FUEL PIPING
12	LUB OIL DRAIN ARRANGEMENT
11	BREATHER ARRANGEMENT
10	EXHAUST SYSTEM
9	COOLING SYSTEM
8	ALTERNATOR COUPLING
7	AIR INTAKE SYSTEM
6	CHARGING ALTERNATOR ASSEMBLY
5	STARTER ASSEMBLY
4	FAN SPACER AND MOUNTING
3	DV12 ENGINE ASSEMBLY
2	AVM ASSEMBLY
1	BASE PLATE ASSEMBLY
SR. NO.	DESCRIPTION

- NOTES:-
1. OUTER DIMENSION-6572(L)x2120(W)x3385(H)
 2. DOOR HINGES - OUTSIDE
 3. PAINT- POWDER COATING FOR ALL CANOPY PANELS KOEL GREEN (IVORY) CANOPY TOP,BASE,TANK PEPSI BLUE POWDER COATING
 4. FOR DETAILS OF FOUNDATION LAYOUT AND INSTALLATION PLAN FOR OPEN DOORS REFER SHEET 2 OF 2.

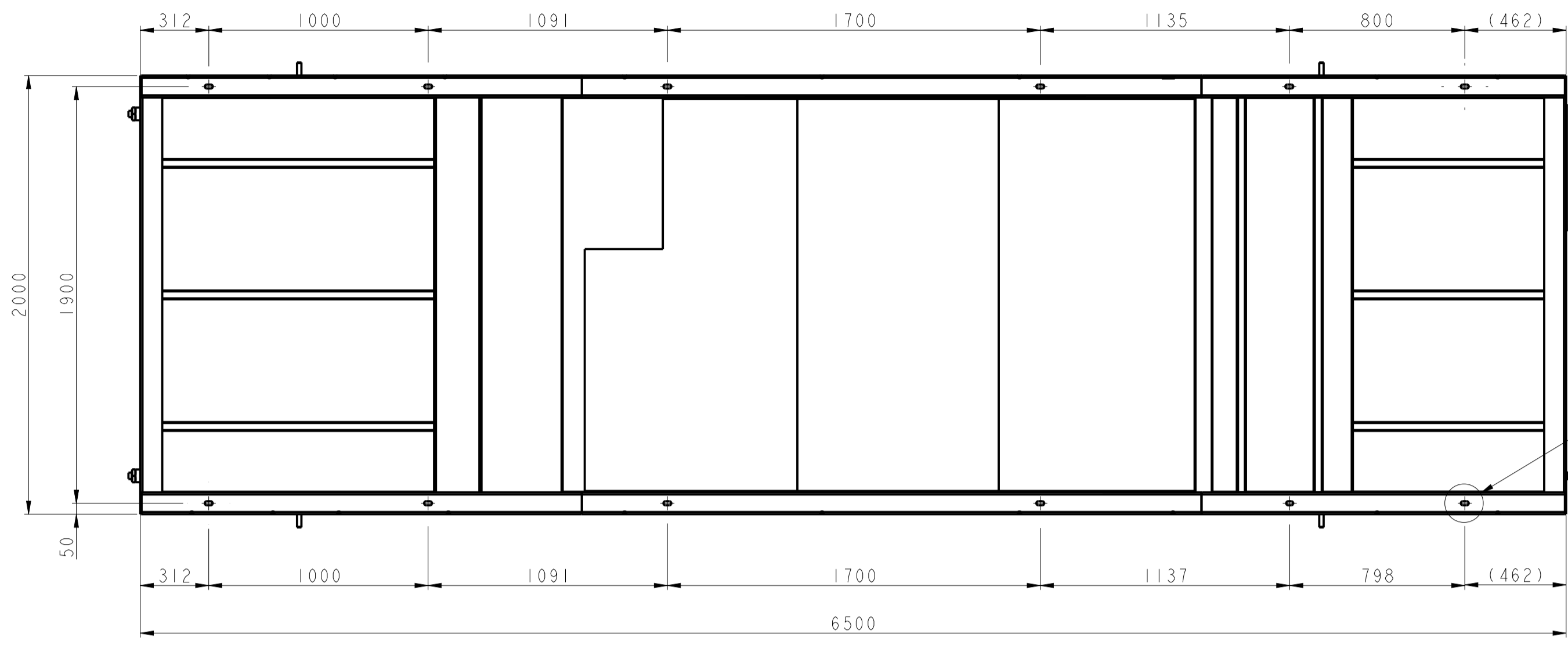
IF IN DOUBT ASK

PRINTS OF PREVIOUS REVISION NO. SHOULD BE SCRAPPED

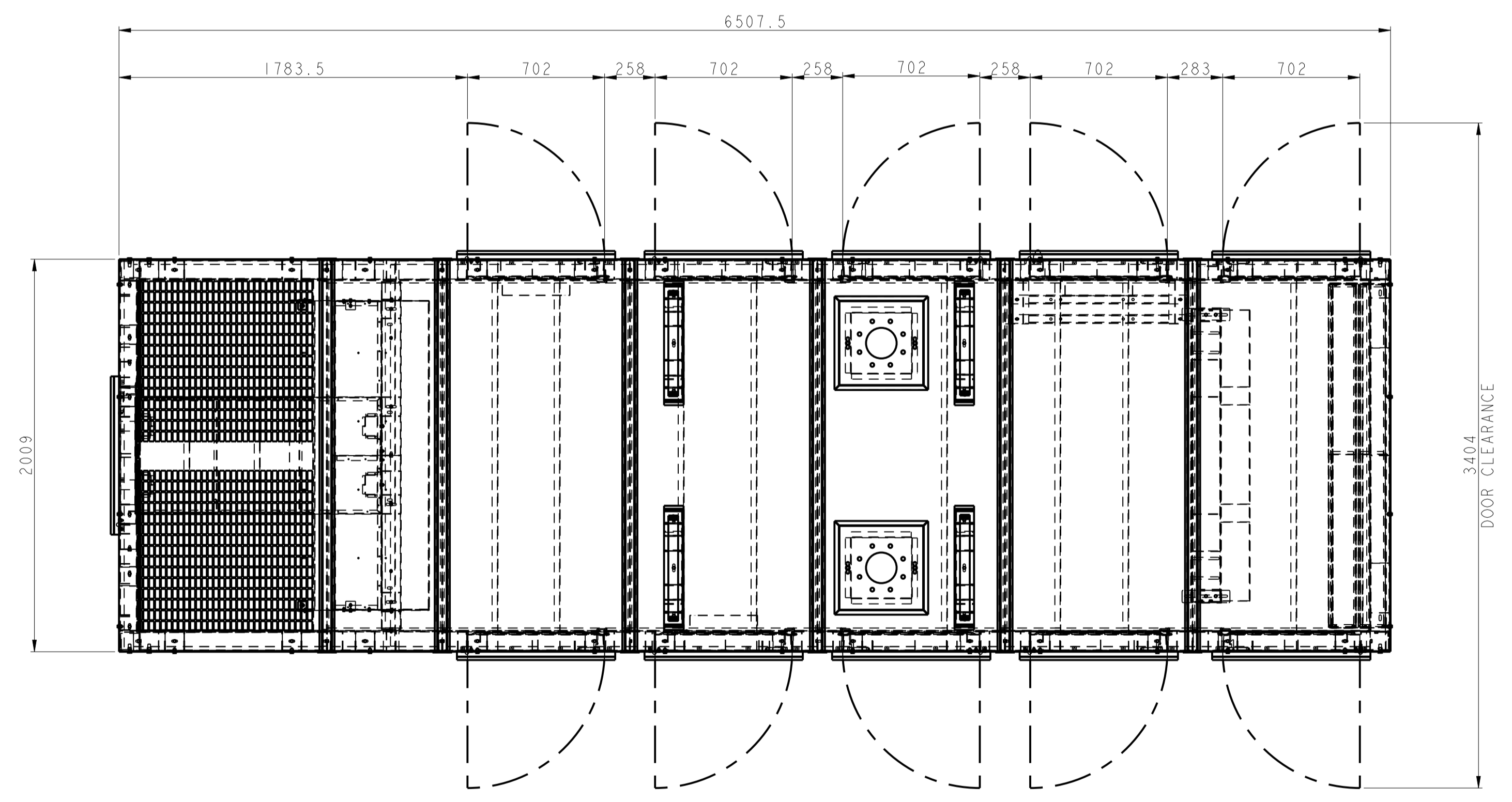
THIS DRAWING IS PROPERTY OF KIRLOSKAR OIL ENGINES LTD. AND MUST BE RETURNED ON REQUEST. IT IS SUBMITTED AS CONFIDENTIAL INFORMATION WITH OUR ENQUIRY, TENDER, ORDER OR CONTRACT NO. IT IS NOT TO BE ISSUED FOR ANY OTHER PURPOSE OR ORDER NOR MAY BE COPIED OR LENT WITHOUT OUR AUTHORITY IN WRITING.

FORMAT No.RBE/FORM/056/01 (REFER DOP No. RBE 4.4/03)

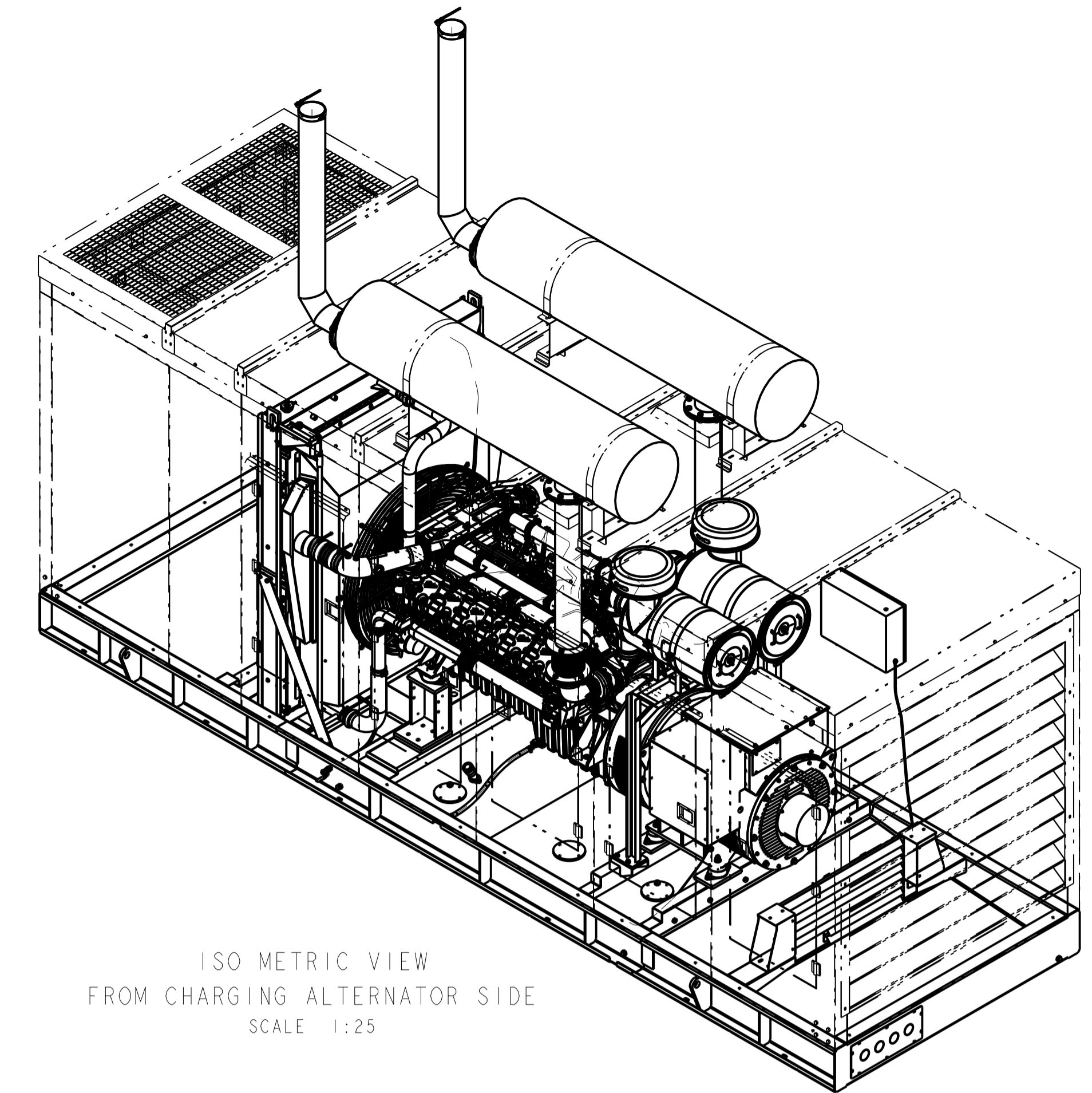
UNLESS OTHERWISE SPECIFIED				CAD DRG. FILE:- PLM				LIFECYCLE STATE:- RELEASED	
● ALL DIMENSIONS ARE IN mm.				MATERIAL :- REFER BOM				CASTING/FORGING DRG. NO. --	
● SURFACE ROUGHNESS AS PER CO. STD.NO.10501.				DRN HARESH				TYPE DV12	
● UNMENTIONED TOLERANCES AS PER CO.STD.NO.11001.				CHD. PAT				SCALE 1:20	
● REMOVE ALL SHARP BURRS AND SHARP EDGES.				APPD. JGJ				SHT. NO 1 OF 2	
● DRAWING NOT TO BE SCALED.				DATE 28/06/2014				DRAWING NO. DV2.5003.00.00	
UNMENTIONED				TITLE GENSET INSTALLATION				REV. NO. 00	
RAD11 --				KIRLOSKAR OIL ENGINES LTD.,				PUNE 411 003 (INDIA)	
CHAMFER --				DRAWING NO. DV2.5003.00.00				REV. NO. 00	
UNDERCUT --				DATE 28/06/2014				REV. NO. 00	
NO. REVISION				NO. REVISION				NO. REVISION	
ZONE				ZONE				ZONE	
MODIFIED BY				MODIFIED BY				MODIFIED BY	
REF. No. DATE				REF. No. DATE				REF. No. DATE	
00 NEW RELEASE				00 NEW RELEASE				00 NEW RELEASE	



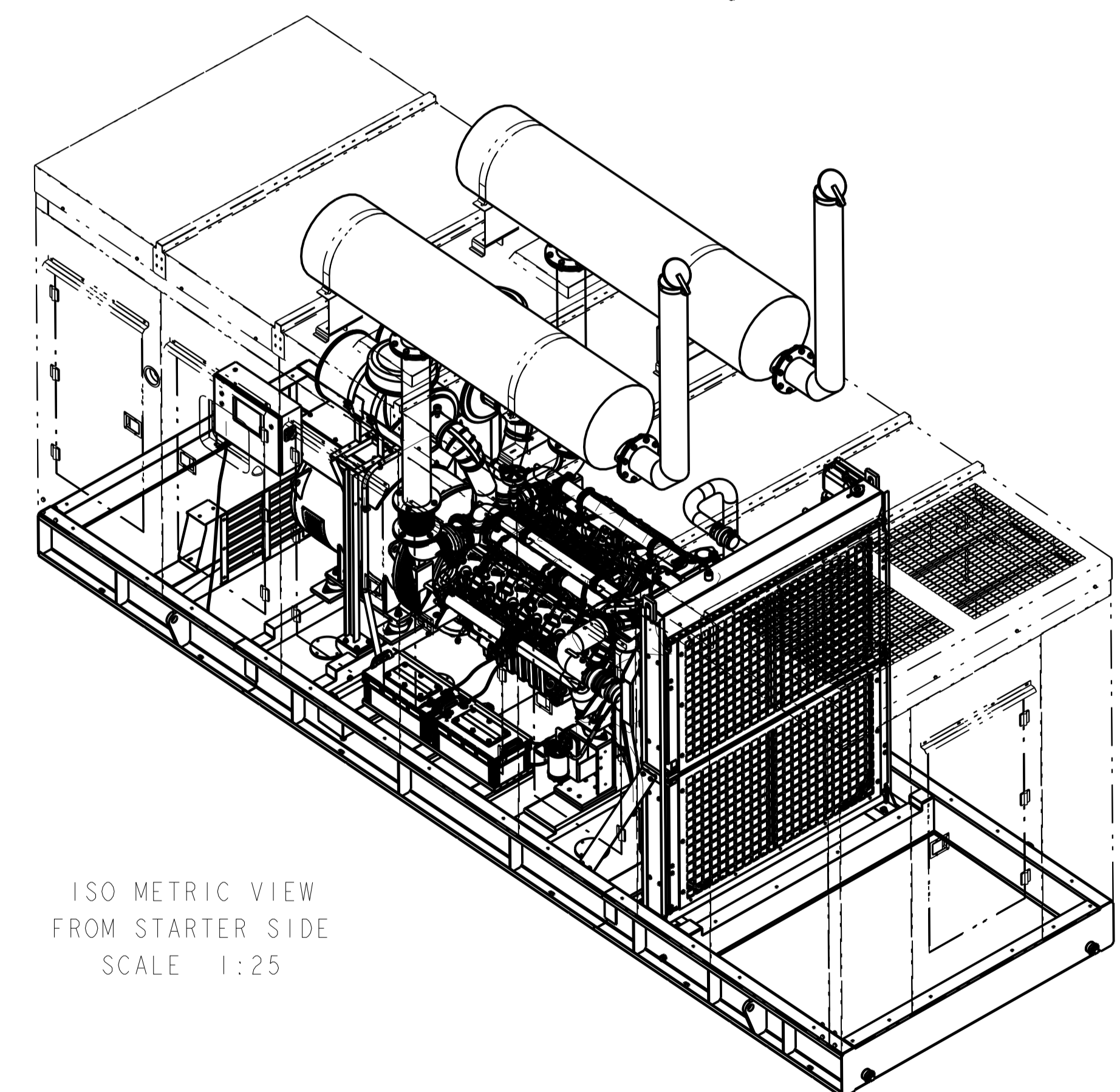
FOUNDATION LAYOUT



INSTALLATION PLAN FOR OPEN DOORS



ISO METRIC VIEW
FROM CHARGING ALTERNATOR SIDE
SCALE 1:25



ISO METRIC VIEW
FROM STARTER SIDE
SCALE 1:25

IF IN DOUBT ASK
PRINTS OF PREVIOUS REVISION NO. SHOULD BE SCRAPPED

THIS DRAWING IS PROPERTY OF KIRLOSKAR OIL ENGINES LTD. AND MUST BE RETURNED ON REQUEST. IT IS SUBMITTED AS CONFIDENTIAL INFORMATION WITH OUR ENQUIRY, TENDER, ORDER OR CONTRACT NO. IT IS NOT TO BE ISSUED FOR ANY OTHER PURPOSE OR ORDER NOR MAY BE COPIED OR LENT WITHOUT OUR AUTHORITY IN WRITING.
FORMAT No. RBE/FORM/056/01 (REFER DOP No. RBE 4.4/03)

UNLESS OTHERWISE SPECIFIED				CAD DRG. FILE:- PLM				LIFECYCLE STATE:- RELEASED	
● ALL DIMENSIONS ARE IN mm.				MATERIAL :- REFER BOM		HEAT TREATMENT :-		CASTING/FORGING DRG. NO. :-	
● SURFACE ROUGHNESS AS PER CO. STD. NO. 40501.				DRN HARESH		TITLE		TYPE DV12	
● UNMENTIONED TOLERANCES AS PER CO. STD. NO. 11001.				CHD. PAT		GENSET INSTALLATION		SCALE 1:20	
● REMOVE ALL SHARP BURRS AND SHARP EDGES.				APPD. JGJ		DATE 28/06/2014		SHT. NO 2 OF 2	
● DRAWING NOT TO BE SCALED.				UNMENTIONED		DV2.0050 28/06/2014		DRAWING NO. DV2.5003.00.00	
RAD11				CHAMFER		KIRLOSKAR OIL ENGINES LTD., PUNE 411 003 (INDIA)		REV. NO. 00	
UNDERCUT									
No.	REVISION	ZONE	MODIFIED BY	REF. No. DATE	No.	REVISION	ZONE	MODIFIED BY	REF. No. DATE